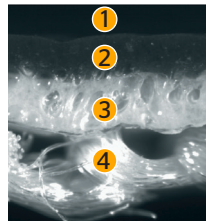
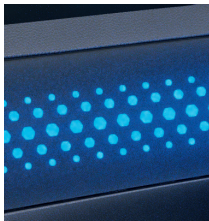




Acella® Hylite

Translucent Surface Material



- 1 Lacquer Finish
- 2 Compact Layer
- 3 Foam Layer
- 4 Textile Backing

Product Benefits

- › Ambient light for emotional accents and fascinating backlit surfaces in vehicle interiors
- › Unilluminated appearance: non-transparent with grain according to customers' requirements and in various colors
- › Light fastness and heat stable up to 90 °C
- › Available with bi-tone colour in one sheet
- › Free of reproduction toxic plasticizers
- › Free of stabilizer containing heavy metals
- › Processable like standard Acella® SEV

Material Construction

Construction	Surface Material
Thickness	1.1 mm
Transmission*	8%
Applications	Door/Side Panel, Center Console
Backing	Textile
Processing Method	Cut & Sew

* Tested on color Ivory. Transmission of material depends of color and thickness and has to be evaluated separately for every combination

Contact



The content of this publication is not legally binding and is provided as information only. The trademarks displayed in this publication are the property of Continental AG and/or its affiliates.
Copyright © 2021 Continental AG. All rights reserved. Registered trademark ® in Europe.
For complete information go to: www.continental-industry.com/disci_en