



Couplings for Hydraulic Applications

Design Data

Contents

General information

Innovative developments from Mobile Fluid Systems	1-6
Product range	1
Selection of seals	2
How to order	4
Resistance chart	4
Sizes - nominal sizes, cross-reference guide	5
	6

Range of couplings

Flat-face quick-connect plug-in couplings	7-22
Quick-connect plug-in couplings	8-9
Straight through plug-in couplings	10-14
Screw couplings for piping	15-17
Quick-connect screw couplings	18-22

*Flat-face
quick-connect
plug-in coupling
Type 52, size 1*



*Quick-connect
plug-in coupling
Type 63, size 2*





Mobile Fluid Systems total

The growing complexity of tasks in modern-day fluid power technology is calling for ever greater expertise of suppliers in that field. Indeed, product solutions now have to be smarter, more specific and more individual – demands ContiTech Fluid is catering for by gearing its activities to innovative products and systems in Europe, North and South America, and China.

Mobile Fluid systems is a partner in co-ordinated product development and an original equipment supplier serving the automotive, mechanical engineering, agricultural and construction machinery industries, manufacturers of lifting, conveyor and compressor systems, as well as many other significant industries.

The materials we work with are rubber, plastic, textile, steel and aluminium. Using process-oriented techniques, we make hoses, hose assemblies, rigid tubing, and hydraulic couplings that are designed to transmit power and control functions for all requirements of the market in an unvaryingly high standard of quality. We are a front runner in designing ingenious and functionally reliable joining technologies, thus ensuring the perfect connection between hoses, piping and fittings as well as their annexed systems.



**Screw couplings
for piping**
Type 60/61, size 2



**Quick connect
screw coupling**
Type 65, size 3

Design data for couplings

Couplings for hydraulic applications

This catalogue from our Industrial Lines segment has been drawn up to assist engineers when selecting standard couplings made by ContiTech Techno-Chemie. These include

- Flat-face quick-connect plug-in couplings
- Quick-connect plug-in couplings
- Straight through plug-in couplings
- Screw couplings for piping
- Quick-connect screw couplings

Product planning and development with a strong market focus

Successful development and optimisation work at our technical centres is the basis for a wide-ranging and versatile line of products tailored to the market requirements. We make consistent use of the synergies produced through simultaneous engineering with our customers, through co-operation with other segments of our business unit as well as through using the corporate-wide services of ContiTech/Continental. We satisfy demands for swift realisation during the sampling phase, and we create individual customer solutions. The transfer of technical and economic data makes co-operation with our customers easier and lowers the cost.

Verified product quality

Our products make a key contribution to safety, delivering constant high-quality performance in the fulfilment of wide-ranging customer requirements and serving in adverse temperature conditions and jobs involving a wide range of media and applications. Multi-stage testing and inspection procedures guarantee that product reliability is way above standard. Our quality management programme assures product excellence and high quality in manufacturing. Compliance with all quality norms has been verified by neutral institutes. ContiTech Techno-Chemie has been certified as complying not only with the automotive standards QS 9000 and VDA 6.1 but also with those for industrial applications. Moreover, we have been approved by various classification organisations for special standards of performance.

Range of products

Couplings made by ContiTech Techno-Chemie are connecting components for liquid and gaseous media and are used to connect and disconnect line systems. With the aid of our couplings, assemblies and equipment can be connected up and disengaged without auxiliary devices. There are three basic types of coupling depending on the application in question:

- Straight through couplings (e.g. type 64)
- Single shut-off couplings (e.g. socket type 64, plug type 63)
- Double shut-off couplings (e.g. types 52, 63, 60/61, 65 and 56)

Straight through couplings give the medium a free passage of flow. Typical applications are pipe systems in which the medium can escape once the system has been switched off and the coupling disconnected.

Single shut-off couplings are equipped with a check valve in the coupling socket. The plug is non-valved. These couplings are used primarily in compressed air units and systems in which the medium is allowed to escape at the non-valved end on disconnection. To guarantee proper functioning of this type of coupling, the medium must always flow from the direction of the non-valved plug end.

Double shut-off couplings have a check valve in each of their coupling halves which opens automatically and reduces air inclusion to a minimum on connection.

All our coupling feature

- low pressure loss / streamlined design
- hardly measurable loss of medium, less environmental pollution
- long-term sealing performance

Five types of coupling are supplied by ContiTech Techno-Chemie:

Flat-face quick-connect plug-in couplings, type 52

Quick-connect plug-in couplings, type 63

Straight through plug-in couplings, type 64

Screw couplings for piping, types 60/61

Quick-connect screw couplings, types 65 and 56

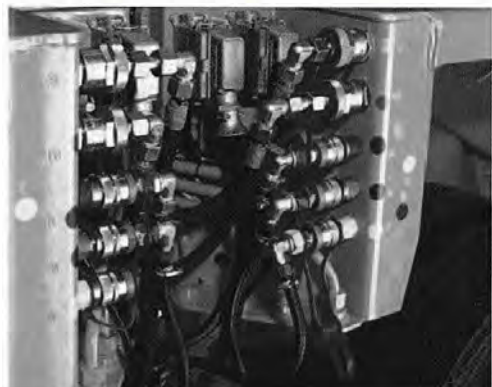
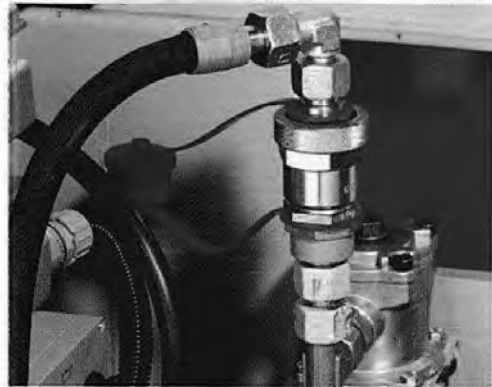
Flat-face quick-connect plug-in couplings, with shut-off facility at both ends, are ball locking type couplings. The plug-in feature allows economic and easy connection and disconnection.

Quick-connect plug-in couplings, with shut-off facility at both ends, work in accordance with the 'push & pull' principle and are also ball locked. The locking sleeve is fixed in locked position by a pre-tensioned spring and can be pushed axially in both directions for connection or disconnection accordingly. These design characteristics make this type suitable for use as an emergency breakaway coupling. In combination with the breakaway facility, the coupling is connected by simply pushing the plug into the socket and disconnected by pulling out the plug.

Straight through plug-in couplings have no valves. They are actuated via the locking sleeve. This type corresponds to the quick-connect plug-in couplings.

Screw couplings for piping also feature flat-face sealing, with a shut-off facility at both ends, and are designed so that sealing of the two coupling halves against one another takes place prior to opening of the valves. On disconnection the valves are already closed again before the coupling halves are separated. A hand nut with a special sturdy round thread is used to connect the two halves.

Quick-connect screw couplings with shut-off facility at both ends are designed for hostile working environments in construction machinery. The socket and plug are connected firmly together by a hand nut with a special heavy-duty thread. The coupling is insensitive to heavy pressure surges and high impulse conditions like those occurring in vehicle hydraulic applications. Sealing and disengagement action is based on the same principle as for the screw couplings for piping. Type 56 is identical in appearance to type 65, but it has a modified interior enabling it to connect under pressure.



Technical information

Selection of seals for couplings

As already mentioned, the range of applications for our couplings is very wide indeed. When selecting the right coupling for the job, due consideration must be given to sealing quality as well. Attention should be given to the following factors:

medium – temperature – service conditions

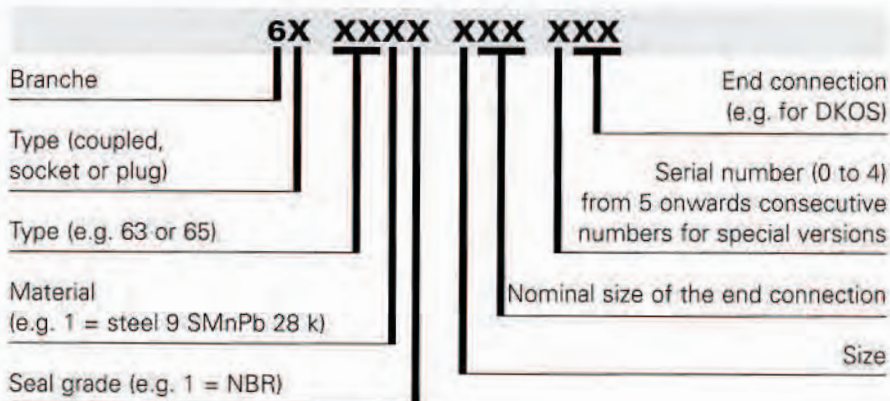
Buna-N rubber is used for standard version seals. However, the special grades FKM, SBR and EPT are also available.

1. Nitrile rubber (NBR), e.g. Buna-N
2. Fluorocarbon rubber (FKM), e.g. Viton
3. Styrene butadiene rubber (SBR), e.g. Buna
4. Ethylene propylene (EPT), e.g. Terpolymer rubber

See page 5 for the resistance chart..

How to order

The part numbers given in the catalogue apply to the standard version (Buna-N)



The above example applies to all nominal sizes and coupling types.

Resistance chart – Operating temperature ranges

Medium	Seal types			
	NBR	FKM	SBR	EPT
ATF-oil (SAE-J311)	-30°C to +100°C	-15°C to +200°C	–	–
Brake fluid (SAEJ1703d)	–	–	-40°C to +100°C	-40°C to +120°C
Glycols	-30°C to +60°C	-15°C to +200°C	-40°C to +100°C	-40°C to +100°C
Hydraulic pressure fluids on mineral oil basis VDMA 24318				
H With no additives (lubricating oils C DIN 51517) (DIN 51524)	-30°C to +100°C	-15°C to +200°C	–	–
HL With additives to improve ageing resistance and anti-corrosion characteristics (DIN 51524)	-30°C to +100°C	-15°C to +200°C	–	–
HLP With extra additives to improve behaviour in mixed friction conditions (DIN 51525)	-30°C to +100°C	-15°C to +200°C	–	–
Air				
Dry	-30°C to +90°C	-15°C to +200°C	-40°C to +90°C	-40°C to +120°C
Oil bearing	-30°C to +90°C	-15°C to +200°C	–	–
Silicone oil	-30°C to +100°C	-15°C to +100°C	–	–
Fire-resistant hydraulic pressure fluids				
HSA Oil-in-water emulsion VDMA 24320	-30°C to +60°C	-15°C to +60°C	–	–
HSB Water-in-oil emulsion VDMA 24317	-30°C to +60°C	-15°C to +60°C	–	–
HSC Glycol-water mix (aqueous solution) VDMA 24317	-30°C to +70°C	-15°C to +70°C	-40°C to +70°C	-40°C to +100°C
HSD Anhydrous fluids (synthetic oils) VDMA 24317				
Phosphate ester	–	-15°C to +100°C	–	-40°C to +100°C
Highly chlorinated hydrocarbons	–	-15°C to +100°C	–	–
Mixtures of phosphate esters and highly chlorinated hydrocarbons	–	-15°C to +100°C	–	-40°C to +70°C
Water	-30°C to +80°C	-15°C to +100°C	-40°C to +90°C	-40°C to +120°C

This resistance chart is designed only to provide general assistance when selecting seals. In case of doubt, please contact us with a precise description of the service conditions in question.

Sizes

Size ¹⁾	DN of the coupling body ¹⁾	Flat-face quick-connect plug-in couplings Type 52	Quick-connect plug-in couplings Type 63	Straight through plug-in couplings Type 64	Screw couplings for piping Type 60/61	Quick-connect screw couplings Type 65 and 56
1	6					+
2	8	+	+	+	+	+
3	10	+	+	+	+	+
4	12					+
6	20		+	+	+	+
8	32				+	

Nominal sizes, cross-reference guide for thread

DN ²⁾	60° seat	24° seat Series		DIN 3852 Part 1 Metric	DIN 3852 Part 2 Inch
		L	S		
5	M 12 x 1.5	M 12 x 1.5	M 16 x 1.5	M 12 x 1.5	G 1/8"
6	M 14 x 1.5	M 14 x 1.5	M 18 x 1.5	M 14 x 1.5	G 1/4"
8	M 16 x 1.5	M 16 x 1.5	M 20 x 1.5	M 16 x 1.5	
10	M 18 x 1.5	M 18 x 1.5	M 22 x 1.5	M 18 x 1.5	G 3/8"
12	M 22 x 1.5	M 22 x 1.5	M 24 x 1.5	M 22 x 1.5	G 1/2"
16	M 26 x 1.5	M 26 x 1.5	M 30 x 2	M 26 x 1.5	G 5/8"
20	M 30 x 1.5	M 30 x 2	M 36 x 2	M 30 x 1.5	G 3/4"
25	M 38 x 1.5	M 36 x 2	M 42 x 2	M 38 x 1.5	G 1"
32	M 45 x 1.5	M 45 x 2	M 52 x 2	M 45 x 1.5	G 1 1/4"

¹⁾ The size is the coded nominal size of the coupling body which applies to a certain flow cross-section.

²⁾ Nominal sizes of the end connections are in accordance with the classification of thread dimensions on the hose assembly fittings.

Flat-face quick-connect plug-in couplings

Quick-connect plug-in couplings

Straight through plug-in couplings

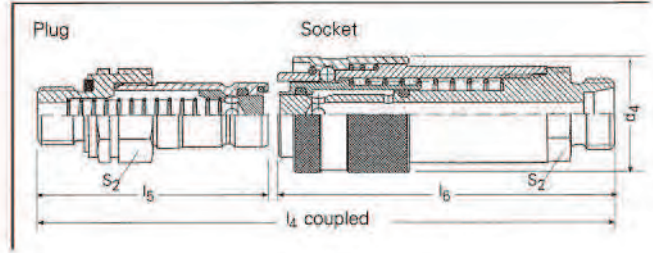
Screw couplings for piping

Quick-connect screw couplings

Couplings



Flat-face quick-connect plug-in coupling, type 52



Technical data

Materials:

Galvanised steel, seal made of Buna-N (standard version)

Applications:

Depend on seal characteristics (see chart on page 5)

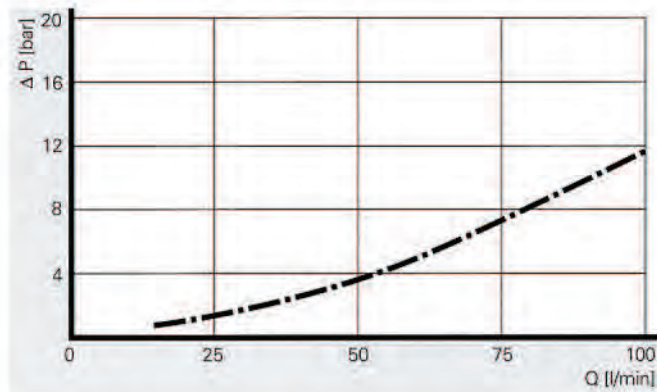
Temperature range:

Depend on seal characteristics (see chart on page 5)

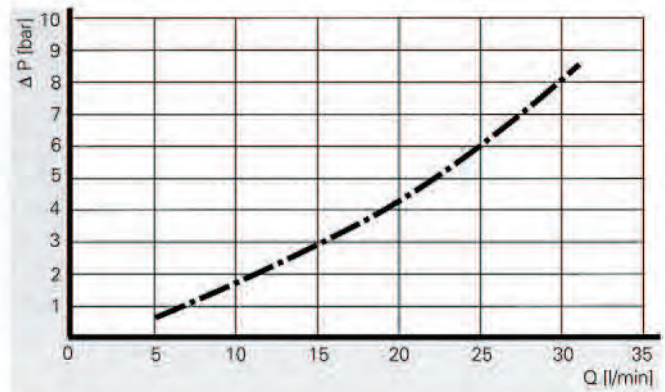
Size	DN	Flow cross-section mm ²	Nominal pressure			Weight kg/each
			Coupled bar	Decoupled Socket bar	Plug bar	
2	8	55	140	140	140	0,21
3	10	105	250	250	250	0,30

Flow resistance of flat-face quick-connect plug-in couplings with 2 adapters

Size 2

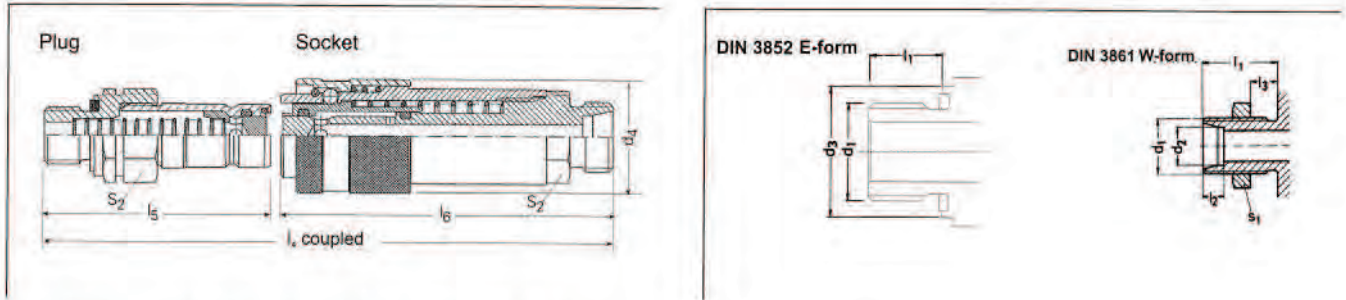


Size 3



Test medium: hydraulic oil, viscosity: 49 cSt 6.5°E — — — —

End connections



End connection for male thread to DIN 3852, E-form

Size	DN	Connection dimensions				Design dimensions					Part No.		
		d_1	d_2	l_1	l_2	d_4	l_4	l_5	l_6	s_2	Compl. coupling	Socket	Plug
2	6	G 1/4"	12	18,9	26	113	53,5	81	22	60 5211 206 030	61 5211 206 030	62 5211 206 030	

End connection for unsoldered pipe fitting to DIN 2353, (light series), and DKL/DKOL 24° seat

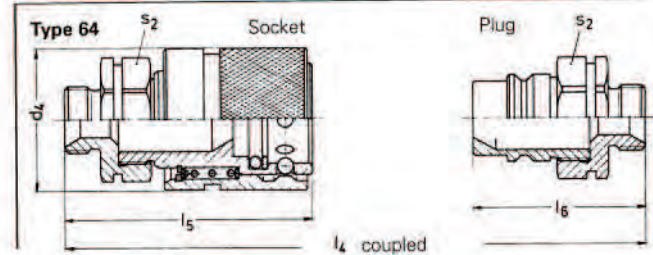
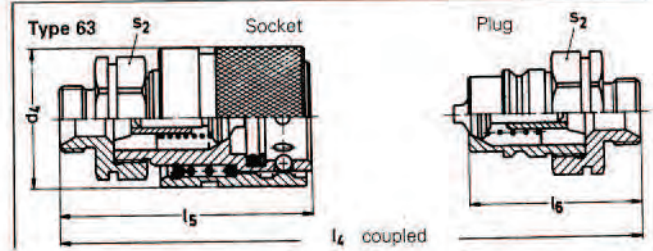
Size	DN	Connection dimensions				Design dimensions				Part No.	
		d_1	d_2	l_1	l_2	d_4	l_4	l_5	l_6	s_2	Socket
2	8	M 16x1,5	10	11	7	26	53,5	77	19	61 5211 208 022	

End connection for unsoldered pipe fitting to DIN 2353, (heavy series), and DKS/DKOS 24° seat

Size	DN	Connection dimensions				Design dimensions					Part No.		
		d_1	d_2	l_1	l_2	d_4	l_4	l_5	l_6	s_2	Compl. coupling	Socket	Plug
3	10	M 22x1,5	14	14	8	38	151	79	93	30	60 5211 310 023	61 5211 310 023	62 5211 310 023

Quick-connect plug-in coupling, type 63

Straight through plug-in coupling, type 64 – same design as type 63, but without valves



Technical data

Materials:

Galvanised steel, seal made of Buna-N (standard version)

Applications:

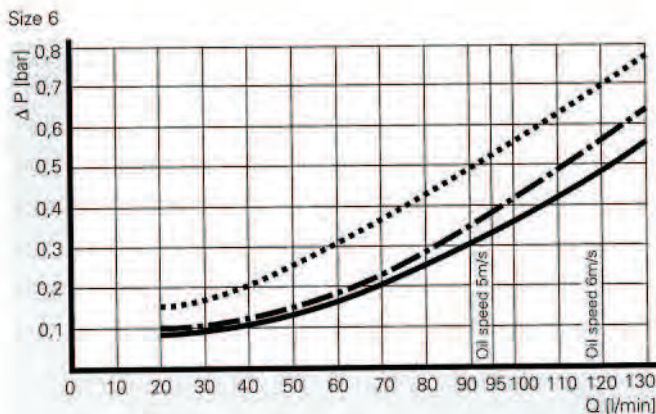
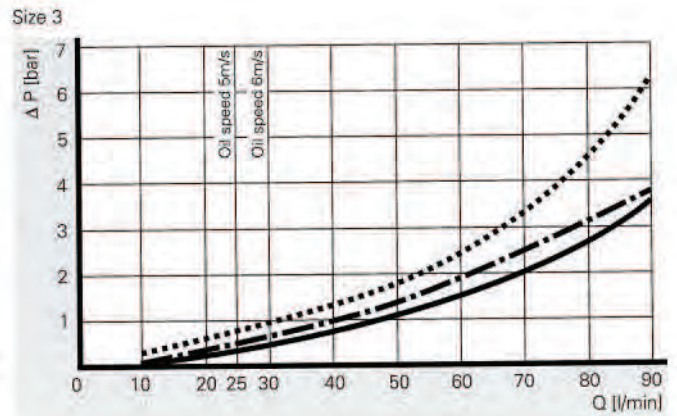
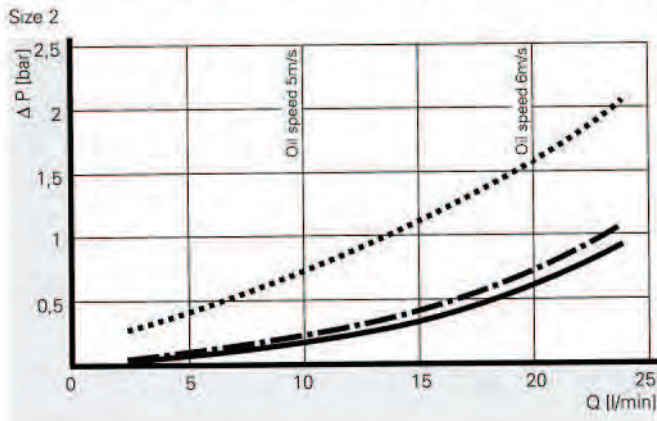
Depend on seal characteristics (see chart on page 5)

Temperature range:

Depend on seal characteristics (see chart on page 5)

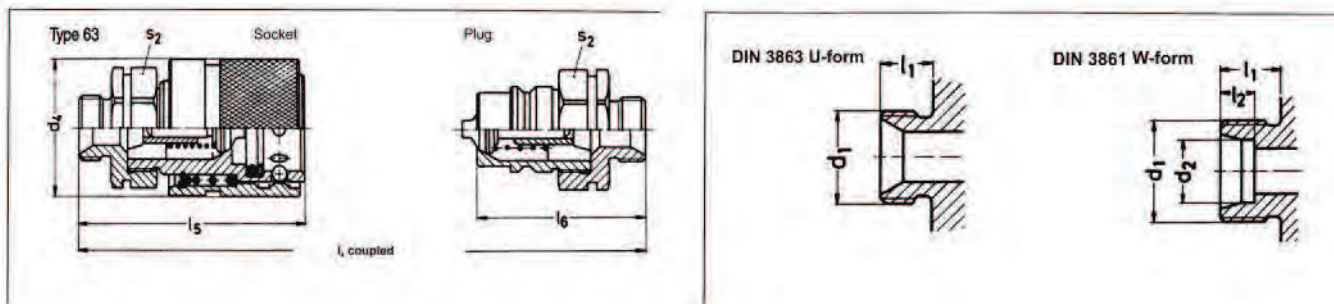
Size	DN	Flow cross-section mm ²	Nominal pressure		Weight kg/each
			Coupling decoupled Socket	Plug	
2	8	50	400	400	0.25
3	10	80	400	400	0.45
6	20	265	400	400	1.00

Flow resistance of quick-connect plug-in couplings with 2 adapters



Test medium: hydraulic oil, viscosity: 22 cSt 3.1°E ——— / 49 cSt 6.5°E - - - - - / 140 cSt 18.5°E ······

End connections



End connection for metric female swivel to DIN 3863 (DKLL) 60° seat

Size	DN	Connection dimensions		Design dimensions						Part No.		
		d ₁	l ₁	d ₄	l ₄	l ₅	l ₆	s ₂	Compl. coupling	Socket	Plug	
2	5	M 12x1,5	10	30,5	92	64	46	22	60 6311 205 021	61 6311 205 021	62 6311 205 021	
2	6	M 14x1,5	10	30,5	92	64	46	22	60 6311 206 021	61 6311 206 021	62 6311 206 021	
2	8	M 16x1,5	10	30,5	92	64	46	22	60 6311 208 021	61 6311 208 021	62 6311 208 021	
3	8	M 16x1,5	10	38,5	94	69	47	30	60 6311 308 021	61 6311 308 021	62 6311 308 021	
3	10	M 18x1,5	10	38,5	94	69	47	30	60 6311 310 021	61 6311 310 021	62 6311 310 021	
3	12	M 22x1,5	12	38,5	98	71	49	30	60 6311 313 021	61 6311 313 021	62 6311 313 021	
3	16	M 26x1,5	12	38,5	98	71	49	30	60 6311 316 021	61 6311 316 021	62 6311 316 021	
6	16	M 26x1,5	12	54	131	99	65	41	60 6311 616 021	61 6311 616 021	62 6311 616 021	
6	20	M 30x1,5	12	54	131	99	65	41	60 6311 620 021	61 6311 620 021	62 6311 620 021	
6	25	M 38x1,5	14	54	135	101	67	41	60 6311 625 021	61 6311 625 021	62 6311 625 021	

End connection for unsoldered pipe fitting to DIN 2353, (light series), and DKL/DKOL 24° seat

Size	DN	Connection dimensions				Design dimensions						Part No.		
		d ₁	d ₂	l ₁	l ₂	d ₄	l ₄	l ₅	l ₆	s ₂	Compl. coupling	Socket	Plug	
2	5	M 12x1,5	6	10	7	30,5	92	64	46	22	60 6311 205 022	61 6311 205 022	62 6311 205 022	
2	6	M 14x1,5	8	10	7	30,5	92	64	46	22	60 6311 206 022	61 6311 206 022	62 6311 206 022	
2	8	M 16x1,5	10	11	7	30,5	94	65	47	22	60 6311 208 022	61 6311 208 022	62 6311 208 022	
3	8	M 16x1,5	10	11	7	38,5	96	70	48	30	60 6311 308 022	61 6311 308 022	62 6311 308 022	
3	10	M 18x1,5	12	11	7	38,5	96	70	48	30	60 6311 310 022	61 6311 310 022	62 6311 310 022	
3	12	M 22x1,5	15	12	7	38,5	98	71	49	30	60 6311 313 022	61 6311 313 022	62 6311 313 022	
3	16	M 26x1,5	18	12	7,5	38,5	98	71	49	30	60 6311 316 022	61 6311 316 022	62 6311 316 022	
6	16	M 26x1,5	18	12	7,5	54	131	99	65	41	60 6311 616 022	61 6311 616 022	62 6311 616 022	
6	20	M 30x2	22	14	7,5	54	135	101	67	41	60 6311 620 022	61 6311 620 022	62 6311 620 022	
6	25	M 36x2	28	14	7,5	54	135	101	67	41	60 6311 625 022	61 6311 625 022	62 6311 625 022	

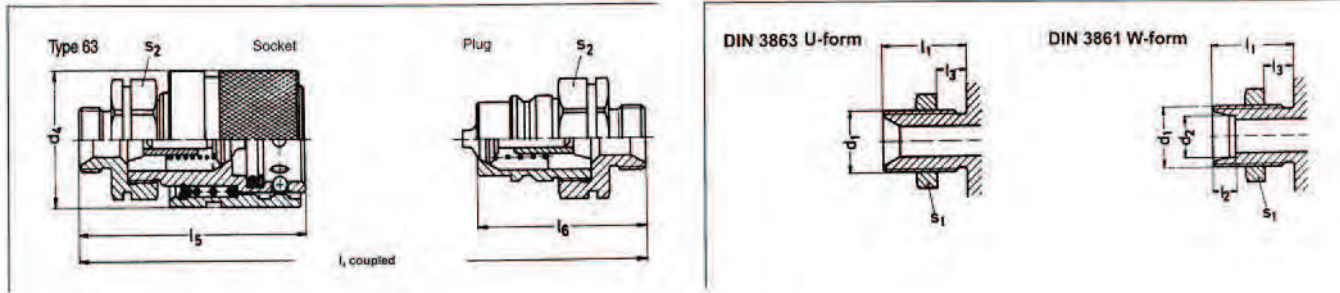
End connection for unsoldered pipe fitting to DIN 2353, (heavy series), and DKS/DKOS 24° seat

Size	DN	Connection dimensions				Design dimensions						Part No.		
		d ₁	d ₂	l ₁	l ₂	d ₄	l ₄	l ₅	l ₆	s ₂	Compl. coupling	Socket	Plug	
2	5	M 16x1,5	8	12	7	30,5	96	66	48	22	60 6311 205 023	61 6311 205 023	62 6311 205 023	
2	6	M 18x1,5	10	12	7,5	30,5	96	66	48	22	60 6311 206 023	61 6311 206 023	62 6311 206 023	
2	8	M 20x1,5	12	12	7,5	30,5	96	66	48	22	60 6311 208 023	61 6311 208 023	62 6311 208 023	
3	8	M 20x1,5	12	12	7,5	38,5	98	71	49	30	60 6311 308 023	61 6311 308 023	62 6311 308 023	
3	10	M 22x1,5	14	14	8	38,5	102	73	51	30	60 6311 310 023	61 6311 310 023	62 6311 310 023	
3	12	M 24x1,5	16	14	8,5	38,5	102	73	51	30	60 6311 313 023	61 6311 313 023	62 6311 313 023	
3	16	M 30x2	20	16	10,5	38,5	106	75	53	30	60 6311 316 023	61 6311 316 023	62 6311 316 023	
6	16	M 30x2	20	16	10,5	54	139	103	69	41	60 6311 616 023	61 6311 616 023	62 6311 616 023	
6	20	M 36x2	25	18	12	54	143	105	71	41	60 6311 620 023	61 6311 620 023	62 6311 620 023	
6	25	M 42x2	30	20	13,5	54	147	107	73	46	60 6311 625 023	61 6311 625 023	62 6311 625 023	

Example of an order for a type 64 straight-through coupling: the 3rd and 4th digits change from 63 to 64 (instead of 60 6311 ... now 60 6411 ...)

Specifications subject to change

End connections for bulkhead fittings



End connection for metric female swivel to DIN 3863 (DKLL) 60° seat

Size	DN	Connection dimensions				Design dimensions				Part No.	Socket	Plug
		d ₁	l ₁	l ₂	s ₁	d ₂	l ₃	l ₄	s ₂			
2	5	M 12x1,5	25	9	17	30,5	79	61	22		61 6311 205 051	62 6311 205 051
2	6	M 14x1,5	25	9	19	30,5	79	61	22		61 6311 206 051	62 6311 206 051
2	8	M 16x1,5	25	9	22	30,5	79	61	22		61 6311 208 051	62 6311 208 051
3	8	M 16x1,5	25	9	22	38,5	84	62	30		61 6311 308 051	62 6311 308 051
3	10	M 18x1,5	25	9	24	38,5	84	62	30		61 6311 310 051	62 6311 310 051
3	12	M 22x1,5	27	9	30	38,5	86	64	30		61 6311 313 051	62 6311 313 051
3	16	M 26x1,5	27	9	36	38,5	86	64	30		61 6311 316 051	62 6311 316 051
6	16	M 26x1,5	32	12	36	54	119	85	41		61 6311 616 051	62 6311 616 051
6	20	M 30x1,5	32	12	41	54	119	85	41		61 6311 620 051	62 6311 620 051
6	25	M 38x1,5	34	14	46	54	121	87	41		61 6311 625 051	62 6311 625 051

End connection for unsoldered pipe fitting to DIN 2353, light series1), and DKL/DKOL 24° seat

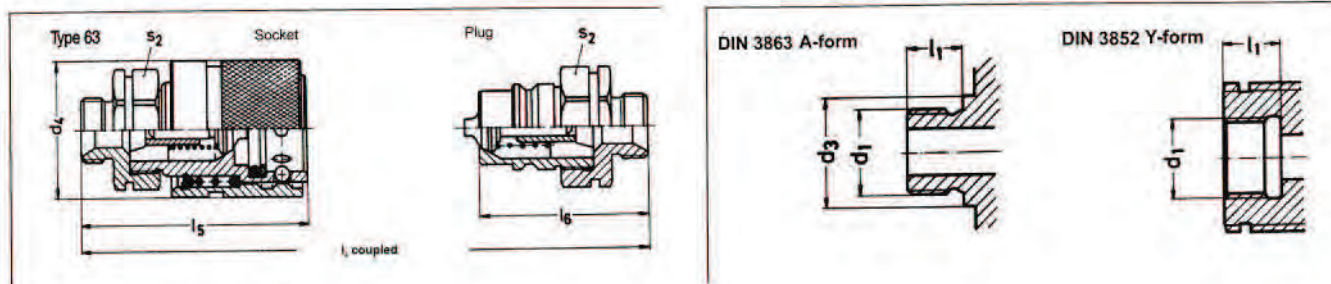
Size	DN	Connection dimensions					Design dimensions					Part No.	Socket	Plug
		d ₁	d ₂	l ₁	l ₂	l ₃	s ₁	d ₄	l ₅	l ₆	s ₂			
2	5	M 12x1,5	6	25	7	9	17	30,5	79	61	22		61 6311 205 052	62 6311 205 052
2	6	M 14x1,5	8	25	7	9	19	30,5	79	61	22		61 6311 206 052	62 6311 206 052
2	8	M 16x1,5	10	26	7	9	22	30,5	80	62	22		61 6311 208 052	62 6311 208 052
3	8	M 16x1,5	10	26	7	9	22	38,5	85	63	30		61 6311 308 052	62 6311 308 052
3	10	M 18x1,5	12	26	7	9	24	38,5	85	63	30		61 6311 310 052	62 6311 310 052
3	12	M 22x1,5	15	27	7	9	30	38,5	86	64	30		61 6311 313 052	62 6311 313 052
3	16	M 26x1,5	18	27	7,5	9	36	38,5	86	64	30		61 6311 316 052	62 6311 316 052
6	16	M 26x1,5	18	32	7,5	12	36	54	119	85	41		61 6311 616 052	62 6311 616 052
6	20	M 30x2	22	34	7,5	12	41	54	121	87	41		61 6311 620 052	62 6311 620 052
6	25	M 36x2	28	34	7,5	12	46	54	121	87	41		61 6311 625 052	62 6311 625 052

End connection for unsoldered pipe fitting to DIN 2353, heavy series1), and DKS/DKOS 24° seat

Size	DN	Connection dimensions					Design dimensions					Part No.	Socket	Plug
		d ₁	d ₂	l ₁	l ₂	l ₃	s ₁	d ₄	l ₅	l ₆	s ₂			
2	5	M 16x1,5	8	27	7	9	22	30,5	81	63	22		61 6311 205 053	62 6311 205 053
2	6	M 18x1,5	10	27	7,5	9	24	30,5	81	63	22		61 6311 206 053	62 6311 206 053
2	8	M 20x1,5	12	27	7,5	9	27	30,5	81	63	22		61 6311 208 053	62 6311 208 053
3	8	M 20x1,5	12	27	7,5	9	27	38,5	86	64	30		61 6311 308 053	62 6311 308 053
3	10	M 22x1,5	14	29	8	9	30	38,5	88	66	30		61 6311 310 053	62 6311 310 053
3	12	M 24x1,5	16	29	8,5	9	32	38,5	88	66	30		61 6311 313 053	62 6311 313 053
3	16	M 30x2	20	31	10,5	9	41	38,5	90	68	36		61 6311 316 053	62 6311 316 053
6	16	M 30x2	20	38	10,5	12	41	54	125	91	41		61 6311 616 053	62 6311 616 053
6	20	M 36x2	25	38	12	12	46	54	125	91	41		61 6311 620 053	62 6311 620 053
6	25	M 42x2	30	40	13,5	12	50	54	127	93	46		61 6311 625 053	62 6311 625 053

Example of an order for a type 64 straight-through coupling: the 3rd and 4th digits change from 63 to 64 (instead of 60 6311... now 60 6411...)

Specifications subject to change

End connections

End connection with male thread DIN 3852 A-form

Size	DN	Connection dimensions			Design dimensions				
		d_1	d_3	l_1	d_4	l_4	l_5	l_6	s_2
2	6	M 14x1,5	19	12	30,5	100	68	50	22
2	8	M 16x1,5	21	12	30,5	100	68	50	22
3	12	M 22x1,5	27	14	38,5	108	76	54	30
6	20	M 30x1,5	36	16	54	145	106	72	41

Part No.		
Compl. coupling	Socket	Plug
60 6311 206 026	61 6311 206 026	62 6311 206 026
60 6311 208 026	61 6311 208 026	62 6311 208 026
60 6311 313 026	61 6311 313 026	62 6311 313 026
60 6311 620 026	61 6311 620 026	62 6311 620 026

End connection with female thread DIN 3852 Y-form

Size	DN	Connection dimensions		Design dimensions				
		d_1	l_1	d_4	l_4	l_5	l_6	s_2
2	6	M 14x1,5	13	30,5	98	67	49	22
2	8	M 16x1,5	13	30,5	98	66	48	22
3	12	M 22x1,5	15	38,5	100	72	50	30
6	20	M 30x1,5	17	54	137	102	68	41

Part No.		
Compl. coupling	Socket	Part No. Plug
60 6311 206 027	61 6311 206 027	62 6311 206 027
60 6311 208 027	61 6311 208 027	62 6311 208 027
60 6311 313 027	61 6311 313 027	62 6311 313 027
60 6311 620 027	61 6311 620 027	62 6311 620 027

End connection with male thread DIN 3852 A-form

Size	DN	Connection dimensions			Design dimensions				
		d_1	d_3	l_1	d_4	l_4	l_5	l_6	s_2
2	6	G 1/4	18	12	30,5	100	68	50	22
2	10	G 3/8	22	12	30,5	100	68	50	22
3	12	G 1/2	26	14	38,5	108	76	54	30
6	25	G 1	39	16	54	145	106	72	41

Part No.		
Compl. coupling	Socket	Plug
60 6311 206 062	61 6311 206 062	62 6311 206 062
60 6311 210 062	61 6311 210 062	62 6311 210 062
60 6311 313 062	61 6311 313 062	62 6311 313 062
60 6311 625 062	61 6311 625 062	62 6311 625 062

End connection with female thread DIN 3852 Y-form

Size	DN	Connection dimensions		Design dimensions				
		d_1	l_1	d_4	l_4	l_5	l_6	s_2
2	6	G 1/4	13	30,5	98	67	49	22
2	10	G 3/8	13	30,5	98	66	48	22
3	12	G 1/2	15	38,5	100	72	50	30
6	25	G 1	18	54	137	102	68	41

Part No.		
Compl. coupling	Socket	Part No. Plug
60 6311 206 063	61 6311 206 063	62 6311 206 063
60 6311 210 063	61 6311 210 063	62 6311 210 063
60 6311 313 063	61 6311 313 063	62 6311 313 063
60 6311 625 063	61 6311 625 063	62 6311 625 063

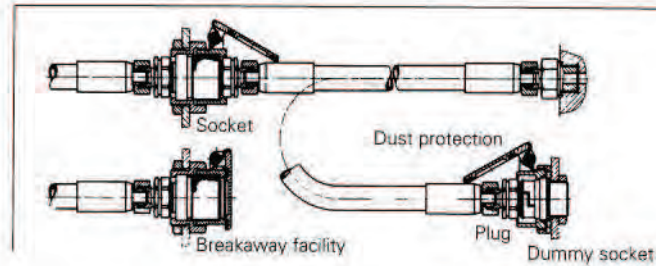
Example of an order for a type 64 straight-through coupling: the 3rd and 4th digits change from **63** to **64** (instead of 60 6311 ... now **60 6411** ...)

Specifications subject to change

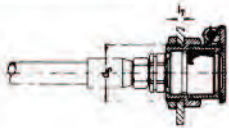
Accessories

for the socket of the coupling:
Breakaway frame with dust protection,
Dummy adapter with dust protection,
Dust plug

for the plug of the coupling:
Dummy socket with dust protection,
Dust cap

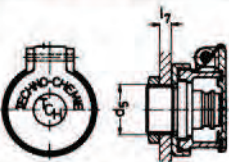


Breakaway frame



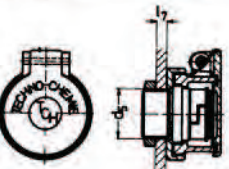
Size	Dimensions		Part No.		
	d_5	l_7	Breakaway frame with dust protection		
3	49	9	63 6301 310 051		
6	66	12	63 6341 620 051		

Dummy plug



Size	Dimensions		Part No.		
	d_5	l_7	Dummy plug with dust protection	Dummy plug	Dust protection
3	31	9	63 6300 310 056	63 6310 310 057	63 6090 208 051

Dummy socket



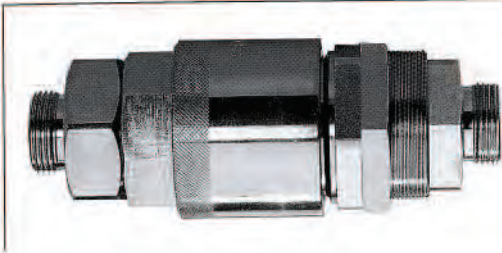
Size	Dimensions		Part No.		
	d_5	l_7	Dummy socket with dust protection	Dummy socket	Dust protection
3	31	9	63 6300 310 061	63 6310 310 062	63 6090 208 051

Dust plug/dust cap



Size	DN	Part No.	
		Dust plug	Dust cap
2	8	64 6390 208 066	64 6390 208 067
3	10	64 6390 310 066	64 6390 310 067
6	16+20	64 6390 620 066	64 6390 620 067
6	25	64 6390 625 066	64 6390 625 067

Screw coupling for piping, type 60/61

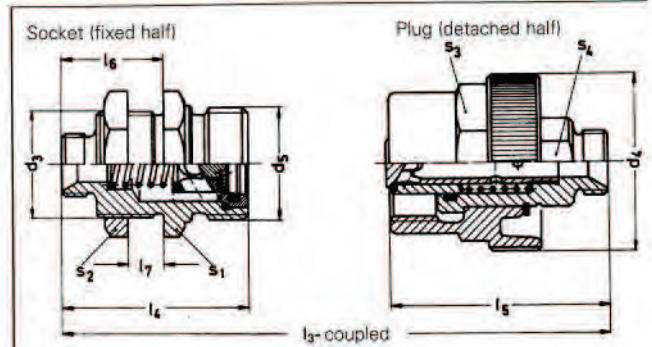


Technical data

Materials:
Galvanised steel, seal made of Buna-N (standard version)

Applications:
Depend on seal characteristics (see chart on page 5)

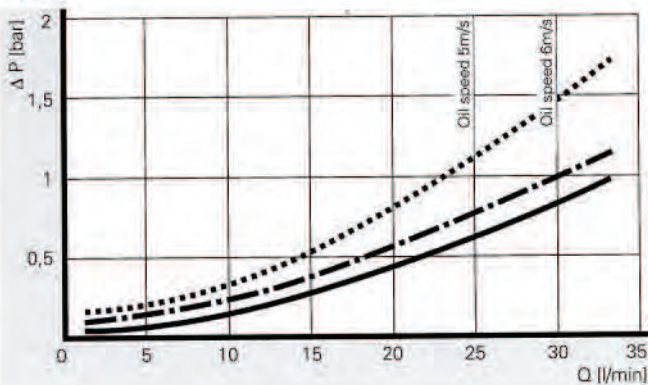
Temperature range:
Depend on seal characteristics (see chart on page 5)



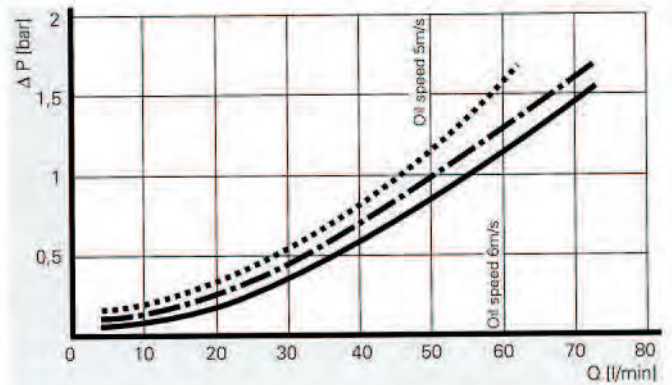
Size	DN	Flow cross-section mm ²	Nominal pressure			Couple under pressure				Weight kg/each
			Coupling coupled bar	Coupling decoupled Socket bar	Plug bar	Couple With key bar	Without key bar	Decouple With key bar	Without key bar	
2	8	55	400	400	200	300	50	300	100	0.60
3	10	105	300	300	160	300	50	300	50	0.80
6	20	285	300	300	200	50	-	100	-	1.75
8	32	620	420	420	420	30	-	30	-	0.80

Flow resistance of screw coupling for piping with 2 adapters

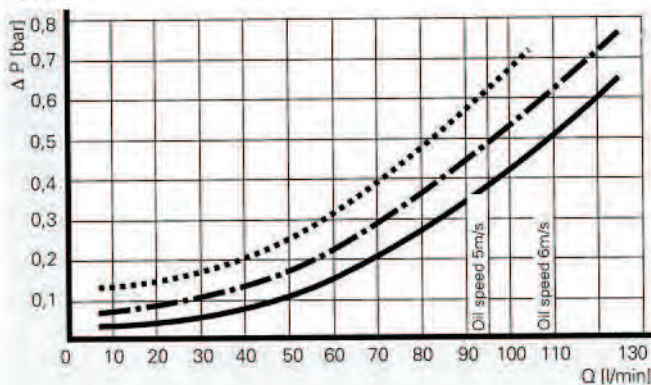
Size 2



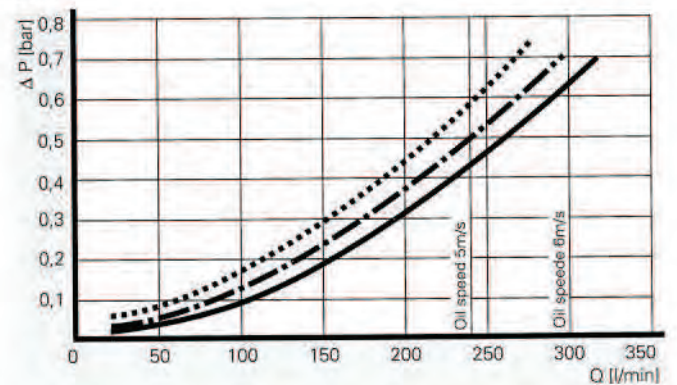
Size 3



Size 6

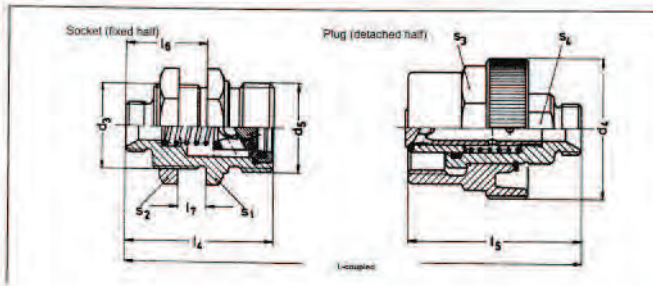


Size 8

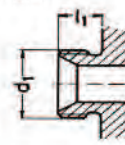


Test medium: hydraulic oil, viscosity: 22 cSt 3.1°E ——— / 49 cSt 6.5°E - - - - - / 140 cSt 18.5°E ······

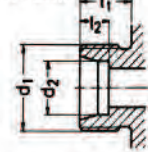
End connections



DIN 3863 U-form



DIN 3861 W-form



End connection for metric female swivel to DIN 3863 (DKLL) 60° seat

Size	DN	Connection dimensions				Design dimensions										Part No.			
		d ₁	l ₁	d ₂	d ₃	d ₄	d ₅	l ₃	l ₄	l ₅	l ₆	l ₇	s ₁	s ₂	s ₃	s ₄	Compl. coupling	Socket	Plug
2	6	M 14x1,5	10	M 30x1	50	Rd 32x3	102	54	62	30	13	36	36	41	22				
2	8	M 16x1,5	10	M 30x1	50	Rd 32x3	101	53	62	29	12	36	36	41	22				
2	10	M 18x1,5	10	M 30x1	50	Rd 32x3	101	53	62	29	12	36	36	41	22				
3	12	M 22x1,5	12	M 36x1	55	Rd 36x3	115	61	71,5	35	16	41	41	46	24				
6	16	M 26x1,5	12	M 54x1,5	64	Rd 54x4	164	90	103	48	14	55	60	55	50				
6	20	M 30x1,5	12	M 54x1,5	64	Rd 54x4	164	90	103	48	14	55	60	55	50				
6	25	M 38x1,5	14	M 54x1,5	64	Rd 54x4	168	92	105	50	14	55	60	55	50				
8	32	M 45x1,5	14	M 80x2	90	Rd 79x4	210	114	132,5	59	19	85	*	75	55				

End connection for unsoldered pipe fitting to DIN 2353, (light series), and DKL/DKOL 24° seat

Size	DN	Connection dimensions				Design dimensions										Part No.				
		d ₁	d ₂	l ₁	l ₂	d ₃	d ₄	d ₅	l ₃	l ₄	l ₅	l ₆	l ₇	s ₁	s ₂	s ₃	s ₄	Compl. coupling	Socket	Plug
2	6	M 14x1,5	8	10	7	M 30x1	50	Rd 32x3	102	54	62	30	13	36	36	41	22			
2	8	M 16x1,5	10	11	7	M 30x1	50	Rd 32x3	103	54	63	30	12	36	36	41	22			
2	10	M 18x1,5	12	11	7	M 30x1	50	Rd 32x3	103	54	63	30	12	36	36	41	22			
3	12	M 22x1,5	15	12	7	M 36x1	55	Rd 36x3	115	61	71,5	35	16	41	41	46	24			
6	16	M 26x1,5	18	12	7,5	M 54x1,5	64	Rd 54x4	164	90	103	48	14	55	60	55	50			
6	20	M 30x2	22	14	7,5	M 54x1,5	64	Rd 54x4	168	92	105	50	14	55	60	55	50			
6	25	M 36x2	28	14	7,5	M 54x1,5	64	Rd 54x4	168	92	105	50	14	55	60	55	50			
8	32	M 45x2	35	18	10,5	M 80x2	90	Rd 79x4	215	116	132,5	61	19	85	*	75	55			

End connection for unsoldered pipe fitting to DIN 2353, (heavy series), and DKS/DKOS 24° seat

Size	DN	Connection dimensions				Design dimensions										Part No.				
		d ₁	d ₂	l ₁	l ₂	d ₃	d ₄	d ₅	l ₃	l ₄	l ₅	l ₆	l ₇	s ₁	s ₂	s ₃	s ₄	Compl. coupling	Socket	Plug
2	6	M 18x1,5	10	12	7,5	M 30x1	50	Rd 32x3	106	56	64	32	13	36	36	41	22			
2	8	M 20x1,5	12	12	7,5	M 30x1	50	Rd 32x3	105	55	64	31	12	36	36	41	22			
2	10	M 22x1,5	14	14	8	M 30x1	50	Rd 32x3	109	57	66	33	12	36	36	41	22			
3	12	M 24x1,5	16	14	8,5	M 36x1	55	Rd 36x3	119	63	73,5	37	16	41	41	46	24			
6	16	M 30x2	20	16	10,5	M 54x1,5	64	Rd 54x4	172	94	107	52	14	55	60	55	50			
6	20	M 36x2	25	18	12	M 54x1,5	64	Rd 54x4	176	96	109	54	14	55	60	55	50			
6	25	M 42x2	30	20	13,5	M 54x1,5	64	Rd 54x4	180	98	111	56	14	55	60	55	50			
8	32	M 52x2	38	22	16	M 80x2	90	Rd 79x4	220	123	132,5	68	19	85	*	75	55			

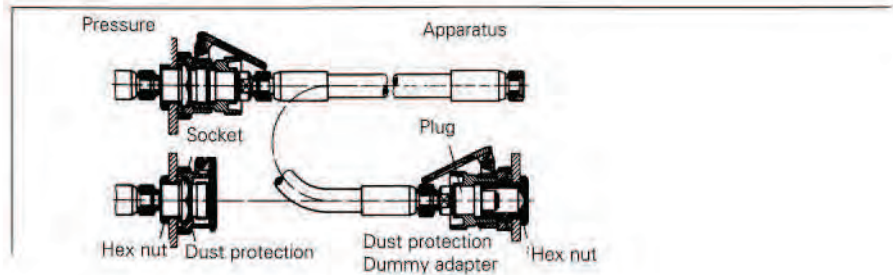
* Cap nut

Specifications subject to change

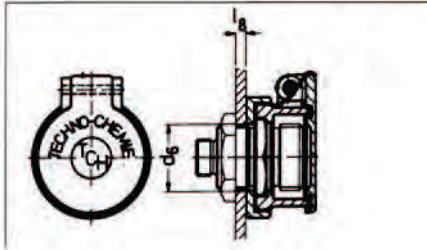
Accessories

for the socket of the coupling:
Dust protection with or without flange,
Cap nut

for the plug of the coupling:
Cap screw

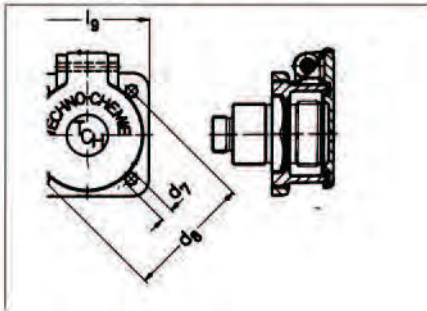


Dust protection without flange



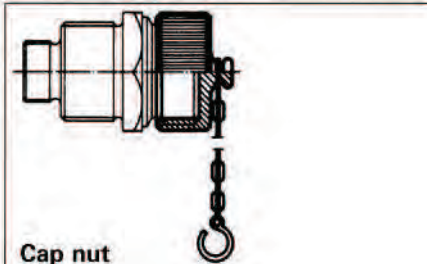
Size	Dimensions		Part No.		
	d_6	l_g	Dust protection	Dummy adapter	Hex nut
2	31	8	63 6090 208 051	64 6010 208 056	38 0822 483 205
3	37	10	63 6001 310 051	64 6010 310 056	38 0822 483 255
6	55	8	63 6141 620 051	64 6110 620 056	38 0822 483 405
8	82	12	63 6041 832 051	64 6010 832 056	38 0840 483 705 ¹⁾

Dust protection with flange

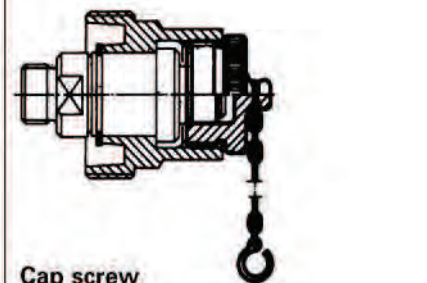


Size	Dimensions			Part No.	
	d_7	d_8	l_g	Dust protection	Dummy adapter
3	6.2	66	66	63 6031 310 054	64 6010 310 061
6	6.5	100	102	63 6141 620 054	64 6110 620 061

Dust protection



Cap nut

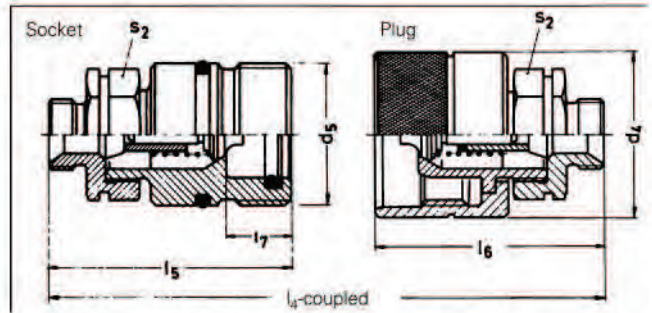


Cap screw

Size	Chain length ≈ mm	Part No.	
		Cap nut	Cap screw
2	150	63 6090 208 066	63 6090 208 067
3	150	63 6090 310 066	63 6090 310 067
6	200	63 6140 620 066	63 6140 620 067
8	200	63 6040 832 066	63 6040 832 067

¹⁾ Cap nut
Specifications subject to change!

Quick-connect screw coupling, types 65 and 56



Technical data

Materials:

Galvanised steel, seal made of Buna-N (standard version)

Applications:

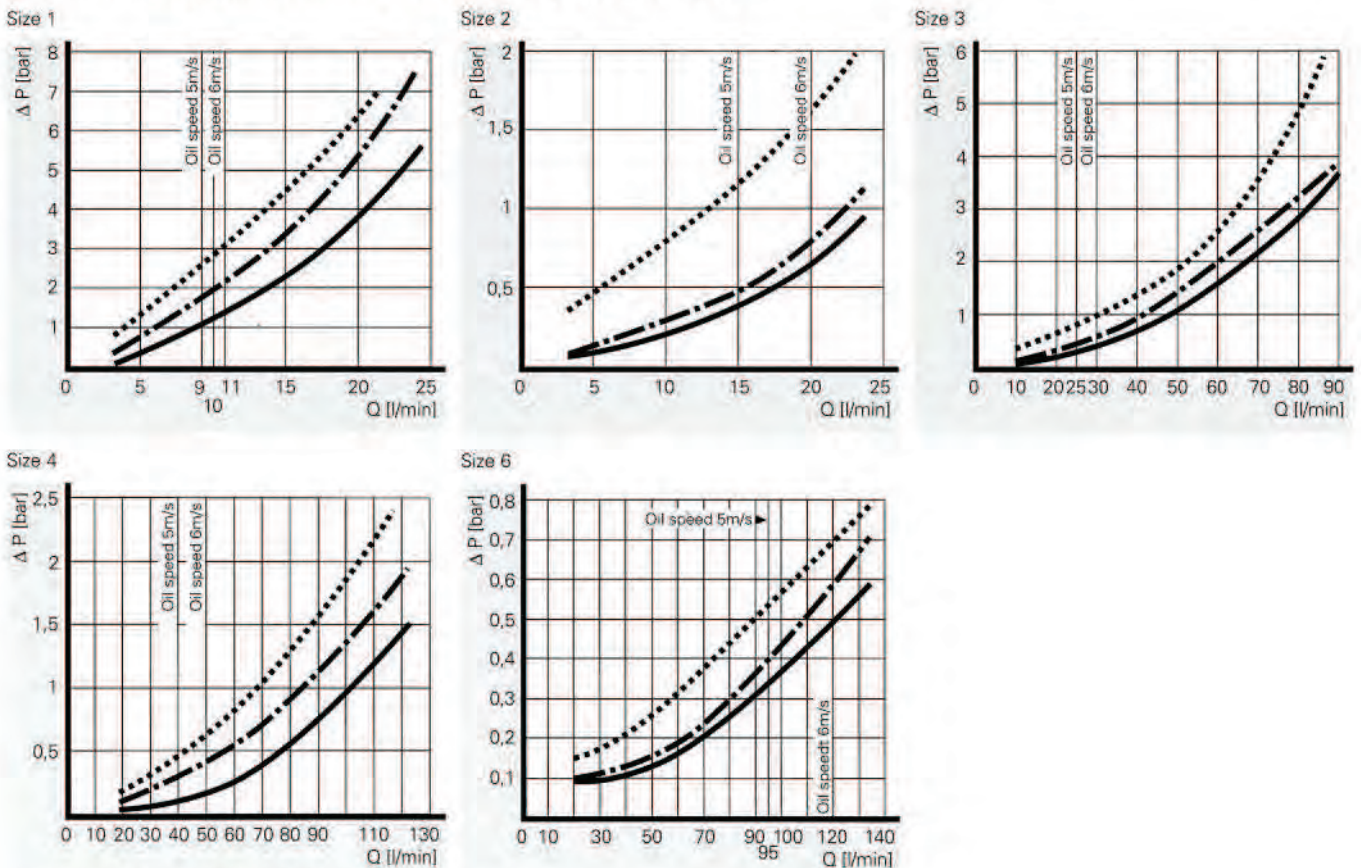
Depend on seal characteristics (see chart on page 5)

Temperature range:

Depend on seal characteristics (see chart on page 5)

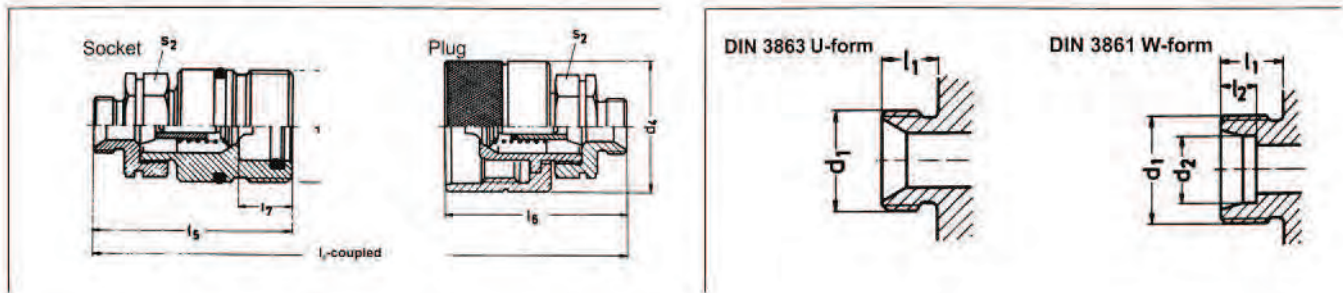
Size	DN	Flow cross-section mm ²	Nominal pressure			Type 56 Couple under pressure		Weight kg/each
			Coupling coupled bar	Coupling decoupled bar	Socket bar	Plug bar	Couple manual bar	
1	6	25	450	450	450	100	300	0.25
2	8	50	450	450	450	80	300	0.32
3	10	80	450	450	450	30	300	0.52
4	12	140	400	400	400	10	200	0.85
6	20	265	300	300	300	10	50	1.20

Flow resistance of quick-connect screw couplings with 2 adapters



Test medium: hydraulic oil, viscosity: 22 cSt 3.1°E ——— / 49 cSt 6.5°E - - - - - / 140 cSt 18.5°E ·······

End connections



End connection for metric female swivel to DIN 3863 (DKLL) 60° seat

Size	DN	Connection dimensions		Design dimensions							Part No.		
		d ₁	l ₁	d ₄	d ₅	l ₄	l ₅	l ₆	l ₇	s ₂	Compl. coupling	Socket	Plug
1	5	M 12x1,5	10	30	Rd 24x2	88	55	56	15	19	60 6511 105 021	61 6511 105 021	62 6511 105 021
1	6	M 14x1,5	10	30	Rd 24x2	88	55	56	15	19	60 6511 106 021	61 6511 106 021	62 6511 106 021
2	6	M 14x1,5	10	34	Rd 28x2	92	61	58	15	22	60 6511 206 021	61 6511 206 021	62 6511 206 021
2	8	M 16x1,5	10	34	Rd 28x2	92	61	58	15	22	60 6511 208 021	61 6511 208 021	62 6511 208 021
3	8	M 16x1,5	10	42	Rd 36x2	97	64	60,5	17	30	60 6511 308 021	61 6511 308 021	62 6511 308 021
3	10	M 18x1,5	10	42	Rd 36x2	97	64	60,5	17	30	60 6511 310 021	61 6511 310 021	62 6511 310 021
3	12	M 22x1,5	12	42	Rd 36x2	101	66	62,5	17	30	60 6511 313 021	61 6511 313 021	62 6511 313 021
4	10	M 18x1,5	10	48	Rd 42x2	113	77	67	21	36	60 6511 410 021	61 6511 410 021	62 6511 410 021
4	12	M 22x1,5	12	48	Rd 42x2	117	79	69	21	36	60 6511 413 021	61 6511 413 021	62 6511 413 021
4	16	M 26x1,5	12	48	Rd 42x2	117	79	69	21	36	60 6511 416 021	61 6511 416 021	62 6511 416 021
6	16	M 26x1,5	12	55	Rd 48x3	133	91	76,5	26	41	60 6511 616 021	61 6511 616 021	62 6511 616 021
6	20	M 30x1,5	12	55	Rd 48x3	133	91	76,5	26	41	60 6511 620 021	61 6511 620 021	62 6511 620 021
6	25	M 38x1,5	14	55	Rd 48x3	137	93	78,5	26	41	60 6511 625 021	61 6511 625 021	62 6511 625 021

End connection for unsoldered pipe fitting to DIN 2353, (light series), and DKL/DKOL 24° seat

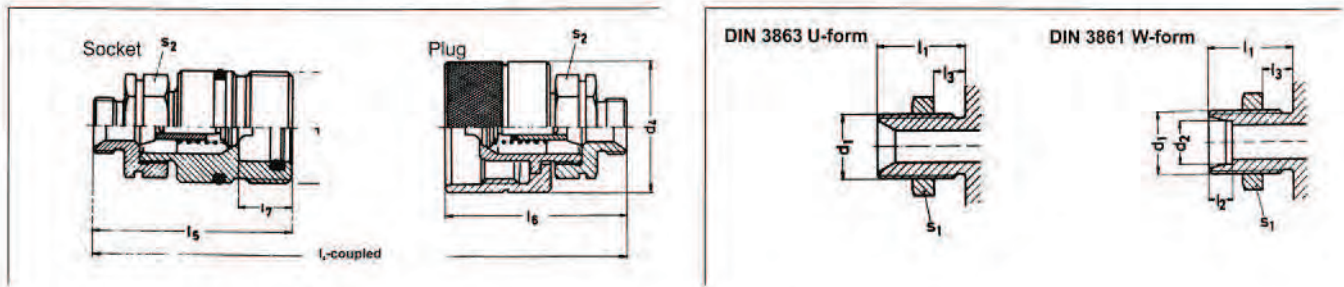
Size	DN	Connection dimensions				Design dimensions							Part No.		
		d ₁	d ₂	l ₁	l ₂	d ₄	d ₅	l ₄	l ₅	l ₆	l ₇	s ₂	Compl. coupling	Socket	Plug
1	5	M 12x1,5	6	10	7	30	Rd 24x2	88	55	56	15	19	60 6511 105 022	61 6511 105 022	62 6511 105 022
1	6	M 14x1,5	8	10	7	30	Rd 24x2	88	55	56	15	19	60 6511 106 022	61 6511 106 022	62 6511 106 022
2	6	M 14x1,5	8	10	7	34	Rd 28x2	92	61	58	15	22	60 6511 206 022	61 6511 206 022	62 6511 206 022
2	8	M 16x1,5	10	11	7	34	Rd 28x2	94	62	59	15	22	60 6511 208 022	61 6511 208 022	62 6511 208 022
3	8	M 16x1,5	10	11	7	42	Rd 36x2	98	65	61,5	17	30	60 6511 308 022	61 6511 308 022	62 6511 308 022
3	10	M 18x1,5	12	11	7	42	Rd 36x2	98	65	61,5	17	30	60 6511 310 022	61 6511 310 022	62 6511 310 022
3	12	M 22x1,5	15	12	7,5	42	Rd 36x2	101	66	62,5	17	30	60 6511 313 022	61 6511 313 022	62 6511 313 022
4	10	M 18x1,5	12	11	7	48	Rd 42x2	115	78	68	21	36	60 6511 410 022	61 6511 410 022	62 6511 410 022
4	12	M 22x1,5	15	12	7,5	48	Rd 42x2	117	79	69	21	36	60 6511 413 022	61 6511 413 022	62 6511 413 022
4	16	M 26x1,5	18	12	7,5	48	Rd 42x2	117	79	69	21	36	60 6511 416 022	61 6511 416 022	62 6511 416 022
6	16	M 26x1,5	18	12	7,5	55	Rd 48x3	133	91	76,5	26	41	60 6511 616 022	61 6511 616 022	62 6511 616 022
6	20	M 30x2	22	14	7,5	55	Rd 48x3	137	93	78,5	26	41	60 6511 620 022	61 6511 620 022	62 6511 620 022
6	25	M 36x2	28	14	7,5	55	Rd 48x3	137	93	78,5	26	41	60 6511 625 022	61 6511 625 022	62 6511 625 022

End connection for unsoldered pipe fitting to DIN 2353, (heavy series), and DKS/DKOS 24° seat

Size	DN	Connection dimensions				Design dimensions							Part No.		
		d ₁	d ₂	l ₁	l ₂	d ₄	d ₅	l ₄	l ₅	l ₆	l ₇	s ₂	Compl. coupling	Socket	Plug
1	5	M 16x1,5	8	12	7	30	Rd 24x2	92	57	58	15	19	60 6511 105 023	61 6511 105 023	62 6511 105 023
1	6	M 18x1,5	10	12	7,5	30	Rd 24x2	92	57	58	15	19	60 6511 106 023	61 6511 106 023	62 6511 106 023
2	6	M 18x1,5	10	12	7,5	34	Rd 28x2	96	63	60	15	22	60 6511 206 023	61 6511 206 023	62 6511 206 023
2	8	M 20x1,5	12	12	7,5	34	Rd 28x2	96	63	60	15	22	60 6511 208 023	61 6511 208 023	62 6511 208 023
3	8	M 20x1,5	12	12	7,5	42	Rd 36x2	101	66	62,5	17	30	60 6511 308 023	61 6511 308 023	62 6511 308 023
3	10	M 22x1,5	14	14	8	42	Rd 36x2	105	68	64,5	17	30	60 6511 310 023	61 6511 310 023	62 6511 310 023
3	12	M 24x1,5	16	14	8,5	42	Rd 36x2	105	68	65	17	30	60 6511 313 023	61 6511 313 023	62 6511 313 023
4	10	M 22x1,5	14	14	8	48	Rd 42x2	121	81	71	21	36	60 6511 410 023	61 6511 410 023	62 6511 410 023
4	12	M 24x1,5	16	14	8,5	48	Rd 42x2	121	81	71	21	36	60 6511 413 023	61 6511 413 023	62 6511 413 023
4	16	M 30x2	20	16	10,5	48	Rd 42x2	125	83	73	21	36	60 6511 416 023	61 6511 416 023	62 6511 416 023
6	16	M 30x2	20	16	10,5	55	Rd 48x3	141	95	80,5	26	41	60 6511 616 023	61 6511 616 023	62 6511 616 023
6	20	M 36x2	25	18	12	55	Rd 48x3	145	97	82,5	26	41	60 6511 620 023	61 6511 620 023	62 6511 620 023
6	25	M 42x2	30	20	13,5	55	Rd 48x3	149	99	84,5	26	45	60 6511 625 023	61 6511 625 023	62 6511 625 023

Example of an order for a type 56 quick-connect screw coupling: the 3rd and 4th digits change from 65 to 56 (instead of 60 6511... now 60 5611...)
 Specifications subject to change

End connections for bulkhead fittings



End connection for metric female swivel to DIN 3863 (DKLL) 60° seat

Size	DN	Connection dimensions					Design dimensions					Part No.	Socket
		d ₁	l ₁	l ₂	s ₁	d ₂	d ₅	l ₅	l ₇	s ₂			
1	5	M 12x1,5	25	9	17	30	Rd 24x2	72	15	19		61 6511 105 051	
1	6	M 14x1,5	25	9	19	30	Rd 24x2	72	15	19		61 6511 106 051	
2	6	M 14x1,5	25	9	19	34	Rd 28x2	76	15	22		61 6511 206 051	
2	8	M 16x1,5	25	9	22	34	Rd 28x2	76	15	22		61 6511 208 051	
3	8	M 16x1,5	25	9	22	42	Rd 36x2	79	17	30		61 6511 308 051	
3	10	M 18x1,5	25	9	24	42	Rd 36x2	79	17	30		61 6511 310 051	
3	12	M 22x1,5	27	9	30	42	Rd 36x2	81	17	30		61 6511 313 051	
4	10	M 18x1,5	25	9	24	48	Rd 42x2	92	21	36		61 6511 410 051	
4	12	M 22x1,5	27	9	30	48	Rd 42x2	94	21	36		61 6511 413 051	
4	16	M 26x1,5	27	9	36	48	Rd 42x2	94	21	36		61 6511 416 051	
6	16	M 26x1,5	32	12	36	55	Rd 48x3	111	26	41		61 6511 616 051	
6	20	M 30x1,5	32	12	41	55	Rd 48x3	111	26	41		61 6511 620 051	
6	25	M 38x1,5	34	12	46	55	Rd 48x3	113	26	41		61 6511 625 051	

End connection for unsoldered pipe fitting to DIN 2353, (light series), and DKL/DKOL 24° seat

Size	DN	Connection dimensions					Design dimensions					Part No.	Socket
		d ₁	d ₂	l ₁	l ₂	l ₃	s ₁	d ₂	d ₅	l ₅	l ₇		
1	5	M 12x1,5	6	25	7	9	17	30	Rd 24x2	72	15	19	61 6511 105 052
1	6	M 14x1,5	8	25	7	9	19	30	Rd 24x2	72	15	19	61 6511 106 052
2	6	M 14x1,5	8	25	7	9	19	34	Rd 28x2	76	15	22	61 6511 206 052
2	8	M 16x1,5	10	26	7	9	22	34	Rd 28x2	77	15	22	61 6511 208 052
3	8	M 16x1,5	10	26	7	9	22	42	Rd 36x2	80	17	30	61 6511 308 052
3	10	M 18x1,5	12	26	7	9	24	42	Rd 36x2	80	17	30	61 6511 310 052
3	12	M 22x1,5	15	27	7	9	30	42	Rd 36x2	81	17	30	61 6511 313 052
4	10	M 18x1,5	12	27	7	9	24	48	Rd 42x2	94	21	36	61 6511 410 052
4	12	M 22x1,5	15	27	7	9	30	48	Rd 42x2	94	21	36	61 6511 413 052
4	16	M 26x1,5	18	27	7,5	9	36	48	Rd 42x2	94	21	36	61 6511 416 052
6	16	M 26x1,5	18	32	7,5	12	36	55	Rd 48x3	111	26	41	61 6511 616 052
6	20	M 30x2	22	34	7,5	12	41	55	Rd 48x3	113	26	41	61 6511 620 052
6	25	M 36x2	28	34	7,5	12	46	55	Rd 48x3	113	26	41	61 6511 625 052

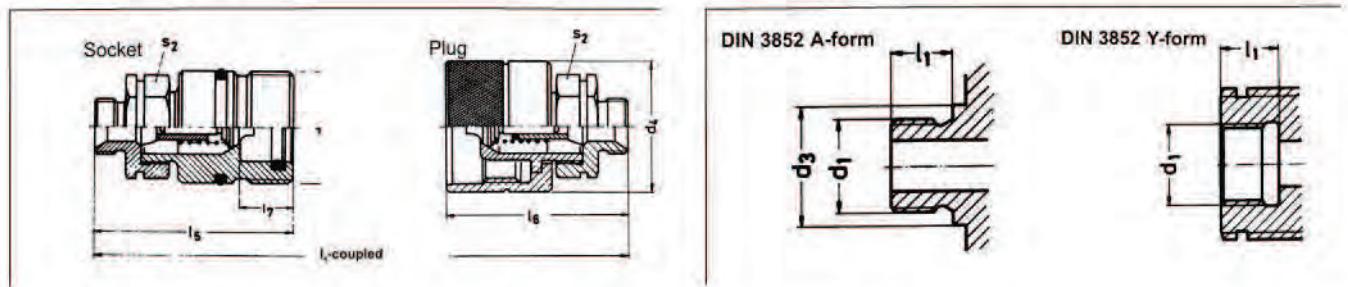
End connection for unsoldered pipe fitting to DIN 2353, (heavy series), and DKS/DKOS 24° seat

Size	DN	Connection dimensions					Design dimensions					Part No.	Socket
		d ₁	d ₂	l ₁	l ₂	l ₃	s ₁	d ₂	d ₅	l ₅	l ₇		
1	5	M 16x1,5	8	27	7	9	22	30	Rd 24x2	74	15	19	61 6511 105 053
1	6	M 18x1,5	10	27	7,5	9	24	30	Rd 24x2	74	15	19	61 6511 106 053
2	6	M 18x1,5	10	27	7,5	9	24	34	Rd 28x2	78	15	22	61 6511 206 053
2	8	M 20x1,5	12	27	7,5	9	27	34	Rd 28x2	78	15	22	61 6511 208 053
3	8	M 20x1,5	12	27	7,5	9	27	42	Rd 36x2	81	17	30	61 6511 308 053
3	10	M 22x1,5	14	29	8	9	30	42	Rd 36x2	83	17	30	61 6511 310 053
3	12	M 24x1,5	16	29	8,5	9	32	42	Rd 36x2	83	17	30	61 6511 313 053
4	10	M 22x1,5	14	29	8	9	30	48	Rd 42x2	96	21	36	61 6511 410 053
4	12	M 24x1,5	16	29	8,5	9	32	48	Rd 42x2	96	21	36	61 6511 413 053
4	16	M 30x2	20	31	10,5	9	41	48	Rd 42x2	98	21	36	61 6511 416 053
6	16	M 30x2	20	38	10,5	12	41	55	Rd 48x3	117	26	41	61 6511 616 053
6	20	M 36x2	25	38	12	12	46	55	Rd 48x3	117	26	41	61 6511 620 053
6	25	M 42x2	30	40	13,5	12	50	55	Rd 48x3	119	26	46	61 6511 625 053

Example of an order for a type 56 quick-connect screw coupling: the 3rd and 4th digits change from 65 to 56 (instead of 60 6511 ... now 60 5611 ...)

Specifications subject to change

End connections



End connection with male thread DIN 3852 D-form

Size	DN	Connection dimensions			Design dimensions							Part No.		
		d ₁	d ₃	l ₁	d ₄	d ₅	l ₄	l ₅	l ₆	l ₇	s ₂	Compl. coupling	Part No. Socket	Plug
1	6	M 14x1,5	19	12	30	Rd 24x2	94	61	59	15	19	60 6511 106 026	61 6511 106 026	62 6511 106 026
2	8	M 16x1,5	21	12	34	Rd 28x2	100	65	62,5	15	22	60 6511 208 026	61 6511 208 026	62 6511 208 026
3	12	M 22x1,5	27	14	42	Rd 36x2	111	71	67,5	17	30	60 6511 313 026	61 6511 313 026	62 6511 313 026
4	16	M 26x1,5	31	16	48	Rd 42x2	125	83	73	21	36	60 6511 416 026	61 6511 416 026	62 6511 416 026
6	20	M 30x1,5	36	16	55	Rd 48x3	147	98	83,5	26	41	60 6511 620 026	61 6511 620 026	62 6511 620 026

End connection with male thread DIN 3852 D-form

Size	DN	Connection dimensions			Design dimensions							Part No.		
		d ₁	d ₃	l ₁	d ₄	d ₅	l ₄	l ₅	l ₆	l ₇	s ₂	Compl. coupling	Part No. Socket	Plug
1	6	G 1/4	18	12	30	Rd 24x2	94	61	59	15	19	60 6511 106 062	61 6511 106 062	62 6511 106 062
2	10	G 3/8	22	12	34	Rd 28x2	100	65	62,5	15	22	60 6511 210 062	61 6511 210 062	62 6511 210 062
3	12	G 1/2	26	14	42	Rd 36x2	111	71	67,5	17	30	60 6511 313 062	61 6511 313 062	62 6511 313 062
4	20	G 3/4	32	16	48	Rd 42x2	125	83	73	21	36	60 6511 420 062	61 6511 420 062	62 6511 420 062
6	25	G 1	39	16	55	Rd 48x3	147	98	83,5	26	41	60 6511 625 062	61 6511 625 062	62 6511 625 062

End connection with male thread DIN 3852 Y-form

Size	DN	Connection dimensions		Design dimensions							Part No.		
		d ₁	l ₁	d ₄	d ₅	l ₄	l ₅	l ₆	l ₇	s ₂	Compl. coupling	Socket	Plug
1	6	M 14x1,5	13	30	Rd 24x2	94	59	57	15	19	60 6511 106 027	61 6511 106 027	62 6511 106 027
2	8	M 16x1,5	13	34	Rd 28x2	96	63	60,5	15	22	60 6511 208 027	61 6511 208 027	62 6511 208 027
3	12	M 22x1,5	15	42	Rd 36x2	103	67	63,5	17	30	60 6511 313 027	61 6511 313 027	62 6511 313 027
4	16	M 26x1,5	17	48	Rd 42x2	125	83	73	21	36	60 6511 416 027	61 6511 416 027	62 6511 416 027
6	20	M 30x1,5	17	55	Rd 48x3	139	94	79,5	26	41	60 6511 620 027	61 6511 620 027	62 6511 620 027

End connection with male thread DIN 3852 Y-form

Size	DN	Connection dimensions		Design dimensions							Part No.		
		d ₁	l ₁	d ₄	d ₅	l ₄	l ₅	l ₆	l ₇	s ₂	Compl. coupling	Socket	Plug
1	6	G 1/4"	13	30	Rd 24x2	94	59	57	15	19	60 6511 106 063	61 6511 106 063	62 6511 106 063
2	10	G 3/8"	13	34	Rd 28x2	96	63	60,5	15	22	60 6511 210 063	61 6511 210 063	62 6511 210 063
3	12	G 1/2"	15	42	Rd 36x2	103	67	63,5	17	30	60 6511 313 063	61 6511 313 063	62 6511 313 063
4	20	G 3/4"	17	48	Rd 42x2	125	83	73	21	36	60 6511 420 063	61 6511 420 063	62 6511 420 063
6	25	G 1"	18	55	Rd 48x3	139	94	79,5	26	41	60 6511 625 063	61 6511 625 063	62 6511 625 063

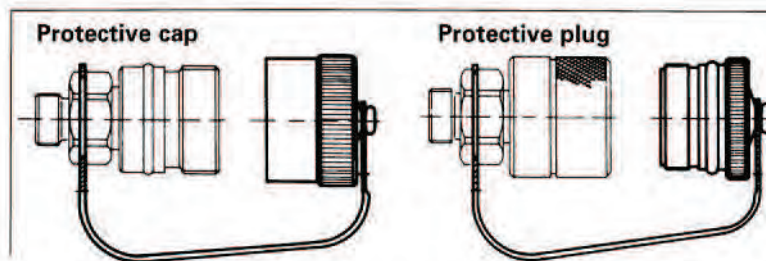
Example of an order for a type 56 quick-connect screw coupling: the 3rd and 4th digits change from 65 to 56 (instead of 60 6511 . . . now 60 5611 . . .)

Specifications subject to change

Accessories

for the socket of the coupling:
Protective cap

for the plug of the coupling:
Protective plug, dummy plug



Size	DN	Part No.	
		Protective cap	Protective plug
1	6	63 6591 106 051	63 6591 106 056
2	8	63 6591 208 051	63 6591 208 056
3	10	63 6591 310 051	63 6591 310 056
4	13	63 6591 413 051	63 6591 413 056
6	16+20	63 6591 620 051	63 6591 620 056
6	25	63 6591 625 051	63 6591 625 056

Mobile Fluid Systems

Contact

ContiTech Techno-Chemie GmbH
Digitalstraße 4-6
D-15366 Hoppegarten

www.contitech.de

More information about our products & solutions for Off-Highway

www.continental-offhighway.com

Contact

off.highway@conti.de

ContiTech. Smart Solutions Beyond Rubber

The Continental Corporation's ContiTech division is one of the world's leading industry specialists. As a technology partner, our name is synonymous with expertise in development and materials for components made of natural rubber and plastics and also in combination with metal and fabrics. By integrating electronic components, we are also generating solutions for the future.

ContiTech provides not only products, systems and services but also holistic solutions and is a formative influence on the industrial infrastructure. We see digitalisation and current trends as an opportunity to work with our customers to add sustainable value - for both sides and for good.